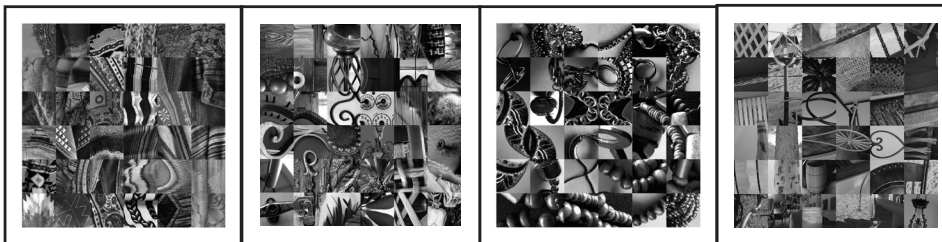


PROJECT 4: EPHEMERAL CONNECTIONS

The purpose of this project is to gain an understanding of the use of software applications in the context of 2D design, specifically Photoshop CS6. You will become familiar with a Mac platform, as well as, Photoshop CS6, cropping, pasting, layers, flattening, free transform, transform, adjustments, move tool, and alignment tools. To explore how we often see connections between similar visual elements in art and how this can be utilized to carry the viewers' eye around the composition (movement) and to create unity. To continue your study of Line, Balance, Positive and Negative Space, Shape, Contrast, Value, Unity, and Texture. You will also be identifying similarities between disparate visual elements and unifying these elements into a harmonious gridded composition using Photoshop CS6.

You will create a 12" x 12" black and white grid with 36 individual 2" square cropped images from different sources that you take. Each cropped image will have visual connective elements to the other images around it. For example, a line in one cropped image will connect to a line in another completely different cropped image to carry your eye across both squares. The goal is to have 3 sides of each square visually connect to the image adjacent to it (see example) but at the least you must have at least 2 sides connect.



INSTRUCTIONS

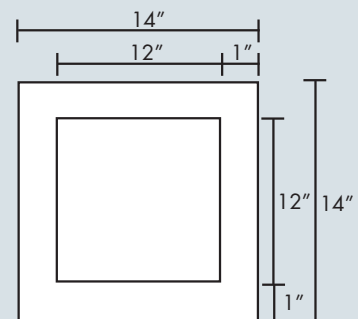
- With a digital camera you will take at least 50 black and white photographs looking for interesting lines, textures, shapes, rhythms, spaces and contrasts. The photos must be of similar elements in the physical world. The least complicated way to make this work is to choose one type of element for your subject like: clothes, machinery, buildings, tree branches, hallway interiors, etc. (see example) However, if you are Photoshop savvy, or feeling brave I invite you to take photos of things that don't necessarily relate to one another. This will make the visual connections more difficult to achieve but they are often more interesting.
- Once you have taken your pictures put them on a flashdrive, a CD, or bring your SD card to class.
 - First lets right click on the desktop and create a folder with your name on it. If you can't right click just hit the shift key and click on the desktop.
 - Then we will open your saved images by putting your device into the Mac and finding it (your device should pop up on the desktop) and dragging one image down to the blue PS button in the dock. If you don't see your dock drag the mouse down towards the bottom of your screen, it should pop up.
 - Once you see your image opened in Photoshop we will convert them to grayscale by going to the top toolbar and going to image then mode then grayscale. Go ahead and discard color information.
 - Then I want you to make sure your image is at a ppi of 300 by going to image then image size, a box will pop up make sure your resolution is set at 300 Pixels/Inch then hit ok.
 - Then we will save them to desktop (where we can drag them into your file) by going back to the toolbar then File then Save As, a box will pop up and notice the Where area just select Desktop and Format Jpeg and hit Save.
 - Minimize PS by hitting the top yellow button in the top left corner just below the toolbar.

SUBMISSION GUIDELINES

Your final project should be presented in mounted form. The final project size is 12" x 12" with a 1" inch border all around. You will mount the final print flush (to the edge) on Illustration board or foam core.

Digital files will be turned in to me. The files should be named:

lastname_ART141_project4.psd
 lastnameflat_ART141_project4.jpg
 lastname_ART141_project4.pdf



DUE DATES

Project should be submitted at the start of class on March

2. We will critique the projects in class. Please be prepared to participate in the critique and explain your work.

QUESTIONS

Katie Krcmarik
 P: 248-321-3434 (cell)
 kkrmarik@hotmail.com

Office Hours:

Varies, but I will be available on campus Mon, Tues, Wed, and Thurs.

- Look on the Desktop and find your image and drag it to your folder. Then go back to your dock and hit the little PS image of your image (right hand side of the dock near the trash).
 - Do this for each image eventually but for the first day we will only do this for 3 images.
3. You will then create a 12" x 12" Photoshop Document format (PSD) with a white background in RGB color mode by opening Photoshop and going to File (upper left hand corner) and hitting new.
 - A box will appear just set the Width as 12 Inches and the Height to 12 Inches. Set the Resolution to 300 Pixels/Inch then Mode to RGB Color and Contents to White.
 - Then select OK. NOTE: From this stage on in these directions the ">" symbol means next step.
 - Then you will go to Photoshop (next to File) > Preferences > Guides, Grids & Slices > enter 2 in Gridline Every ___ inches and enter 4 in Subdivisions ___ hit and hit OK.
 - If your grid is not showing in your document try selecting View in top bar > Extras or if that doesn't work View > Show > Grid.
 - Now that your document is set up and your grid is showing save your file as a PSD (photoshop document) on the desktop as your lastname.psd by going to File > Save As > lastname Format PSD Where > Desktop.
 4. We then go to File > Open > and find our photographs and open them in Photoshop. Now, if we want we can then manipulate the Brightness/Contrast of the photo by going to: Image > Adjustments > Brightness/Contrast. Now I want you to select the Rectangular Marquee Tool, it's the tool right under the black arrow (move tool) in the tool bar usually to the left of the screen.
 - If you don't see a tool bar go to the top bar: Window > tools. With your Rectangular Marquee Tool selected put 2" in both the width and height options right below the top bar.
 5. Click on your photo and a perfect 2" square selection box will appear. You can move it around and put it around exactly what you want to select. If your box seems small compared to your photo let me know it's an easy fix.
 - Once you have an area that interests you go to the top bar and select: Edit > Copy. Then go to your 12" x 12" document by selecting its tab below the top bar.
 - Once your document is open go to: Edit > Paste and there is the first square in your document! It will automatically paste itself into a new Layer (which I will discuss). You can select the black arrow at the top of the tool bar to move your square around in the document.
 6. You can then manipulate that square as long as you are in the same layer it is in. Try going to: Edit > Free Transform. While holding down the shift key drag one of the highlighted corners of your square with the mouse and you can uniformly change its size!
 - Now try: Edit > Transform > Rotate. You can flip, rotate, etc. each square! Try selecting a few squares from separate photos and pasting them into your document.
 - Each one will be on its own layer. You must have the right layer selected (see right side of the screen) by selecting it, or if it is not visible then go to the top bar: Windows > Layers.
 - Whatever layer you are in is highlighted in blue in the layers tab. When in a layer that is the only layer you can manipulate the rest are safe.
 7. Now that you have a few squares try identifying some similar 2D design traits: similar lines, textures, values, etc. within your squares. Selecting the layer of the square you wish to work on select the move tool and put your square in the top left hand corner of the document and then begin manipulating the other square around it.
 - If elements are not meeting up just right change the size of your square until it does using Free Transform (remember to hold down the shift key to lock proportions). Now that you have elements meeting up you have to large a square. No problem, just select your Rectangular Marquee Tool and select the area of your square you wish to keep.
 - Then go to: Edit > Copy. Then drag the layer you are working in to the garbage (lower right hand corner of Layers tab) and trash it. Once your square is gone go to: Edit > Paste and just the area you chose will be pasted into the document.
 8. Repeat for all 36 squares. Make sure you don't have any space between any of the squares and that they are lining up properly (I will show you how using an align tool). Try your hardest to make visual connections on all sides of your squares! Every once in a while go up to View > Extras and take a look at your image with the grid off (this is how it will be printed out).
 9. We will then save your file as a PSD and a flattened JPEG. You can do this by going to File > Save As > choose format, PSD titled with your lastname.psd Then go to Select > Select All > Layer > Flatten Image. You can do this by going to File > Save As > choose format, Jpeg titled with your lastnameflat.jpeg Now you have a version with all the layers present (PSD) and a version that is flattened (jpeg).
 10. Create a PSD file that is 14" x 14" with a white background in RGB color mode by opening Photoshop and going to File (upper left hand corner) and hitting new. Once you have this open go back to your flattened jpeg version and go to Select > Select All > Edit > Copy. Then come back to your 14" x 14" PSD file and go to Edit > Paste. Your grid should now be pasted directly in the center of your 14" x 14" document leaving a 1" border all the way around the image. Now go to File > Save As > PDF.

MATERIALS

Digital Camera, 50 Digital Photographs, Flashdrive